



EMPIRE EAST
HIGHLAND CITY

EMPIRE EAST HIGHLAND CITY

Luxurious Uphill Community in the East

Reinvent the way you live in this 24-hectare mixed-use development that is set to heighten the standards of eastern living. Empire East Highland City offers an elevated city concept that will soon redefine the skyline of Pasig-Cainta.

Its main entrance to the property is located along Felix Avenue in Cainta, which also serves as a gateway to the Green City of Pasig's business districts and the flourishing City of Cainta's tourist destinations - captivating both the fabulous city luxuries and relaxing highland ambiance.

This expansive property is divided into three phases. First, the Highland Park - an 8,000-square meter open space with sprawling greens dedicated to providing enough bonding and excitement for families. Next is the Highland Mall, a centerpiece lifestyle mall that is sure to bring a sophisticated shopping experience to everyone. And, lastly, the Highland Residences, composed of 38 high-rise residential towers that will offer panoramic views of its surrounding areas, as well as a secured home in the city.



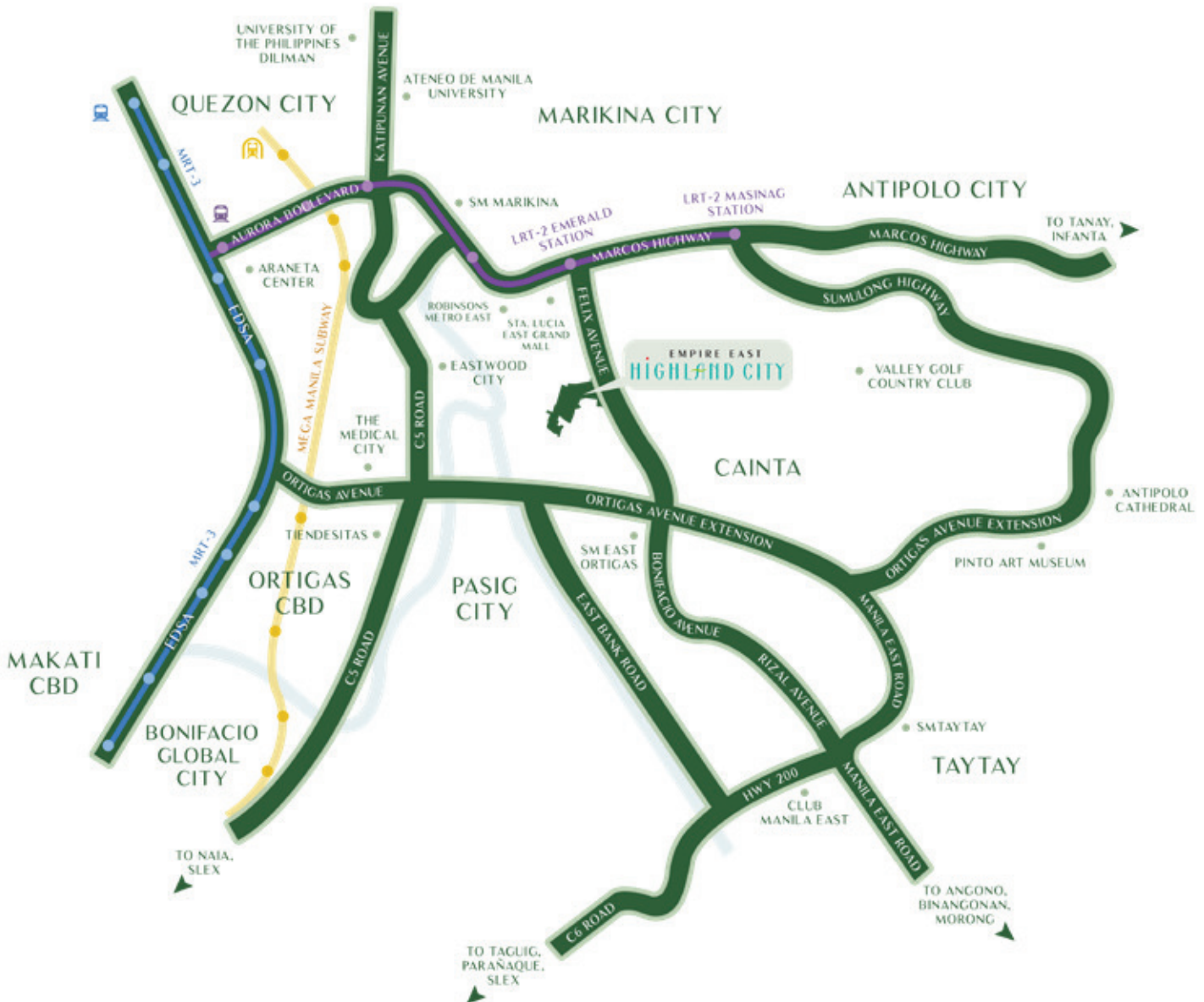
EMPIRE EAST
HIGHLAND CITY



As of April 2019.
Details are subject to change without prior notice.
For reference and presentation purposes only.

EMPIRE EAST HIGHLAND CITY

LOCATION MAP AND LANDMARKS



These renderings are based on the architect's perspective and do not form part of an offer or contract. Selling price is established principally on a per unit basis and not on the unit measurement or dimension. Empire East reserves the right to modify these illustrations without prior notice. Clients are invited to verify subsequent changes. As of April 2019. For reference and presentation purposes only.

PROJECT MASTER PLAN



These renderings are based on the architect's perspective and do not form part of an offer or contract. Selling price is established principally on a per unit basis and not on the unit measurement or dimension. Empire East reserves the right to modify these illustrations without prior notice. Clients are invited to verify subsequent changes. As of April 2019. For reference and presentation purposes only.

ARCADIA SITE DEVELOPMENT PLAN



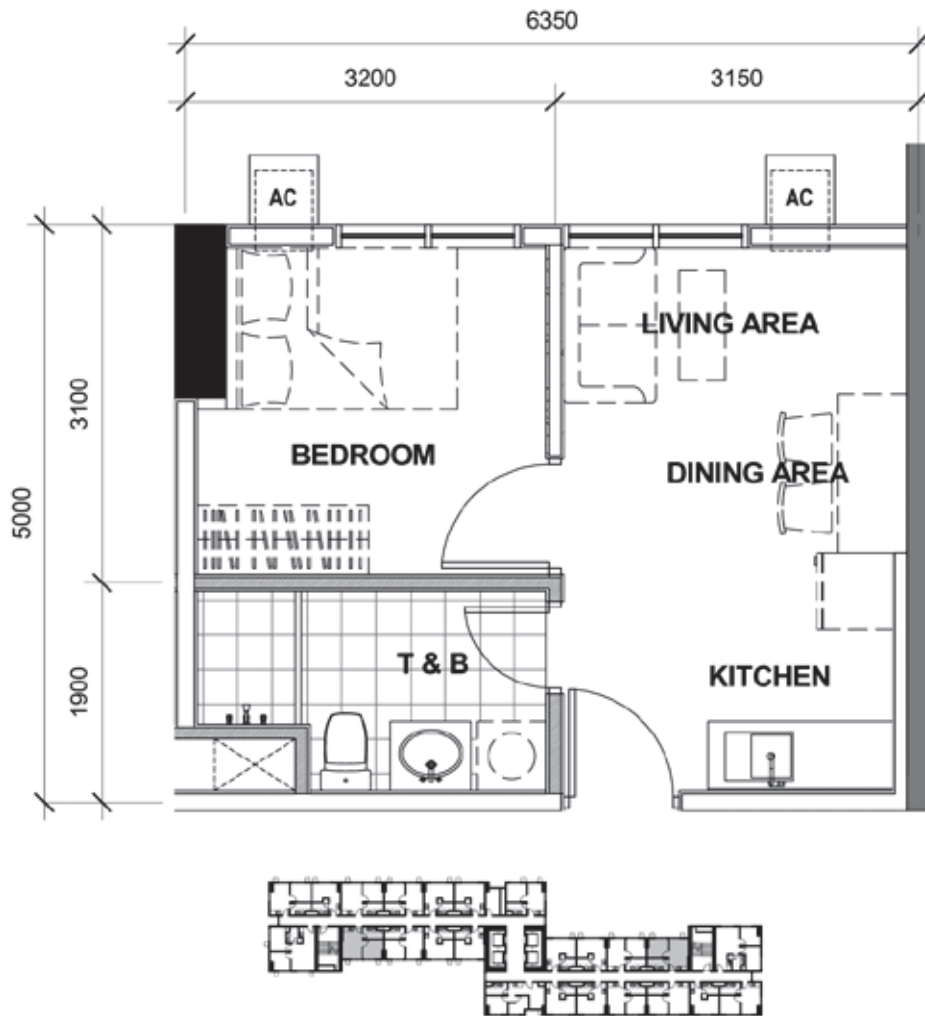
These renderings are based on the architect's perspective and do not form part of an offer or contract. Selling price is established principally on a per unit basis and not on the unit measurement or dimension. Empire East reserves the right to modify these illustrations without prior notice. Clients are invited to verify subsequent changes. As of April 2019. For reference and presentation purposes only.

ARCADIA: TOWER 1 FLOOR PLAN



7th to 9th Level
11th to 20th Level
22nd to 37th Level

ARCADIA: TOWER 1 - UNIT LAYOUT TYPICAL ONE BEDROOM UNIT

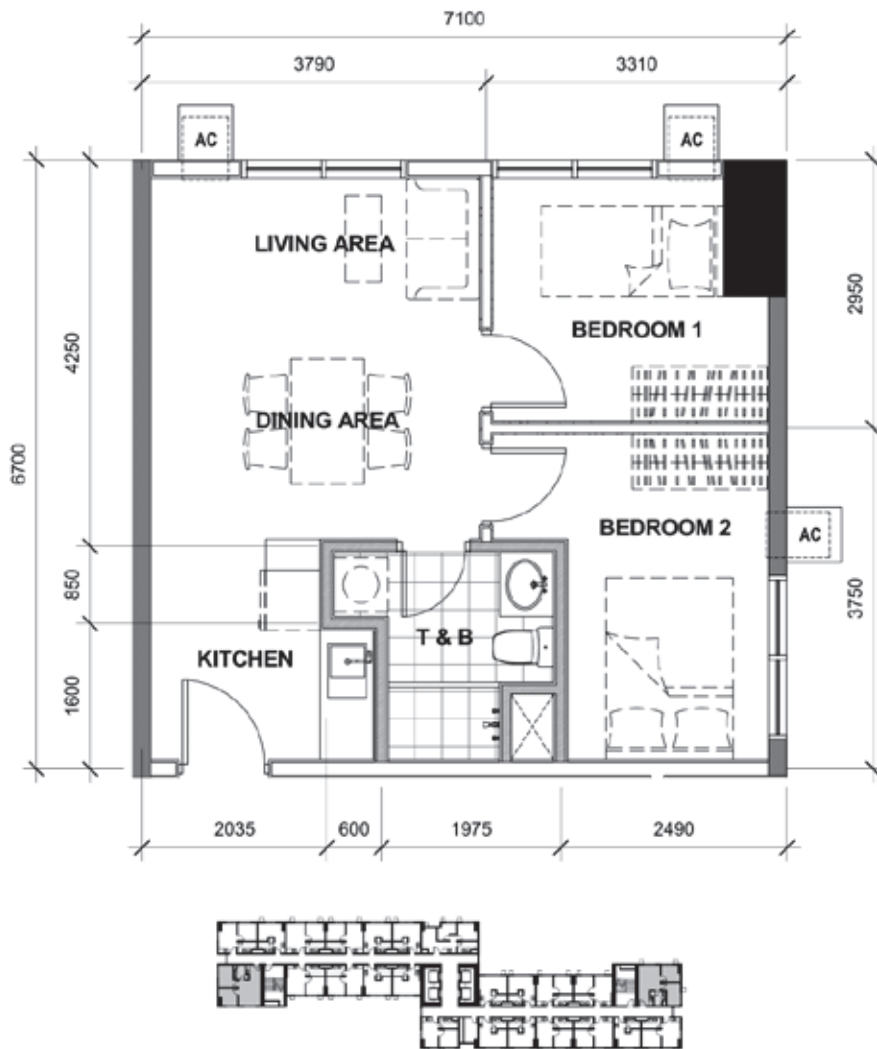


30.63 SQM

7th to 37th Level

UNIT 9, 22

ARCADIA: TOWER 1 - UNIT LAYOUT TYPICAL TWO BEDROOM UNIT



46.50 SQM

7th to 37th Level

UNIT 8, 21

These renderings are based on the architect's perspective and do not form part of an offer or contract. Selling price is established principally on a per unit basis and not on the unit measurement or dimension. Empire East reserves the right to modify these illustrations without prior notice. Clients are invited to verify subsequent changes. As of April 2019. For reference and presentation purposes only.



Empire East

SAMPLE COMPUTATION

Empire East Highland City

	Unit 9 1BR	Unit 8 2BR
	30.63 sqm.	46.50sqm
Selling Price	4,031,900.00	6,094,870.00
15% Less: Promo Discount	604,785.00	914,230.50
Net Promo Discount	3,427,115.00	5,180,639.50
12% Add: VAT	411,253.80	621,676.74
Net Selling Price	3,838,368.80	5,802,316.24

TERMS OF PAYMENT

OPTION 1

30% of Net Selling Price	1,151,510.64	1,740,694.87
Less: Reservation Fee	25,000.00	25,000.00
	1,126,510.64	1,715,694.87
Monthly Amoritization for Month 1-48	23,468.97	35,743.64
70% Balance Upon Turnover	2,686,858.16	4,061,621.37

OPTION 2

20% of Net Selling Price	767,673.76	1,160,463.25
Less: Reservation Fee	25,000.00	25,000.00
	742,673.76	1,135,463.25
Monthly Amoritization for Month 1-48	15,472.37	23,655.48
10% of Net Selling Price	383,836.88	580,231.62
Lumpsum on Month 12, 24, 36 and 48	95,959.22	145,057.91
70% Balance Upon Turnover	2,686,858.16	4,061,621.37
7% Other Fees	282,233.00	426,640.90

Notes:

1. Empire East Land Holdings, Inc. reserves the right to correct error that may appear on above computation.
2. The Reservation Fee (25,000) is non-refundable in case of cancellation or withdrawal by the buyer.
3. All outstanding balances are due and demandable upon unit turn over.
4. All checks should be made payable to **Empire East Land Holdings, Inc.**
5. Hotel accommodation gift certificate is given to buyers upon issuance of complete PDCs within 30 working days from reservation date.
6. Prices and other details are subject to change without prior notice.
7. Other charges is computed at 7% of the Selling Price and shall be settled separately thru Empire East's Credit and Collection Department.